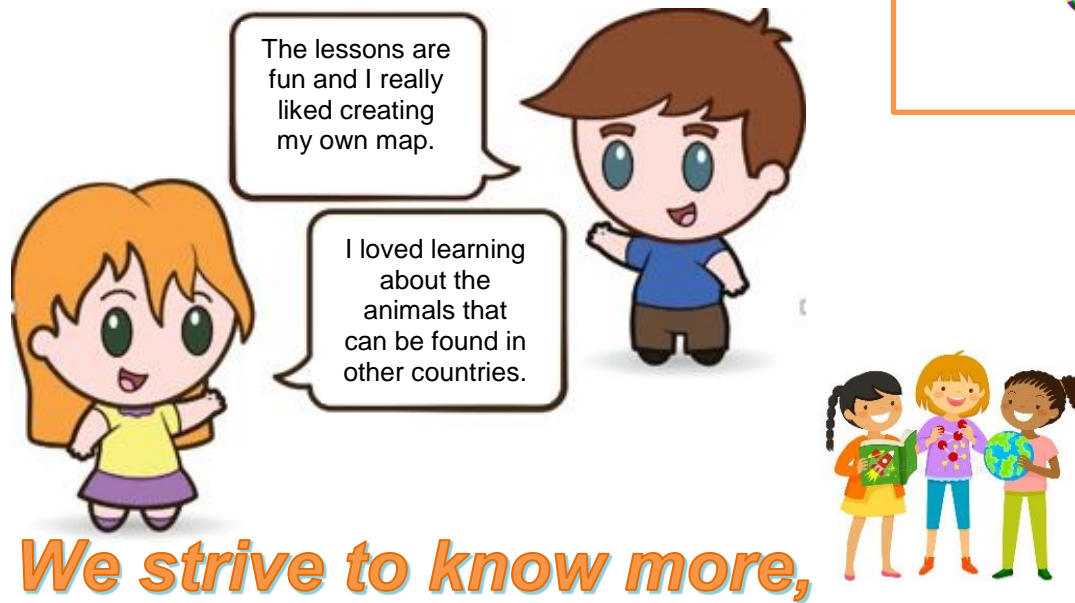


Geography

What does Geography look like at Old Bexley?

At Old Bexley, we aim to inspire the children to engage with and be curious about the world around them. They will explore the connections between the physical land and its interaction with humans. They will learn to question how and why things happen to enable them to learn more about the beauty of our natural planet and how we can develop, protect and change it. The children will experience life in the 'field' to enhance and support their knowledge. We will equip them with the skills and knowledge, recognising that their hands will shape the future of the world.



We strive to know more, remember more, and understand more.

What is the purpose of Geography at Old Bexley?

To create an ethos of curiosity and fascination about the world and its people which will create a deeper understanding of the Earth's physical and human processes.

